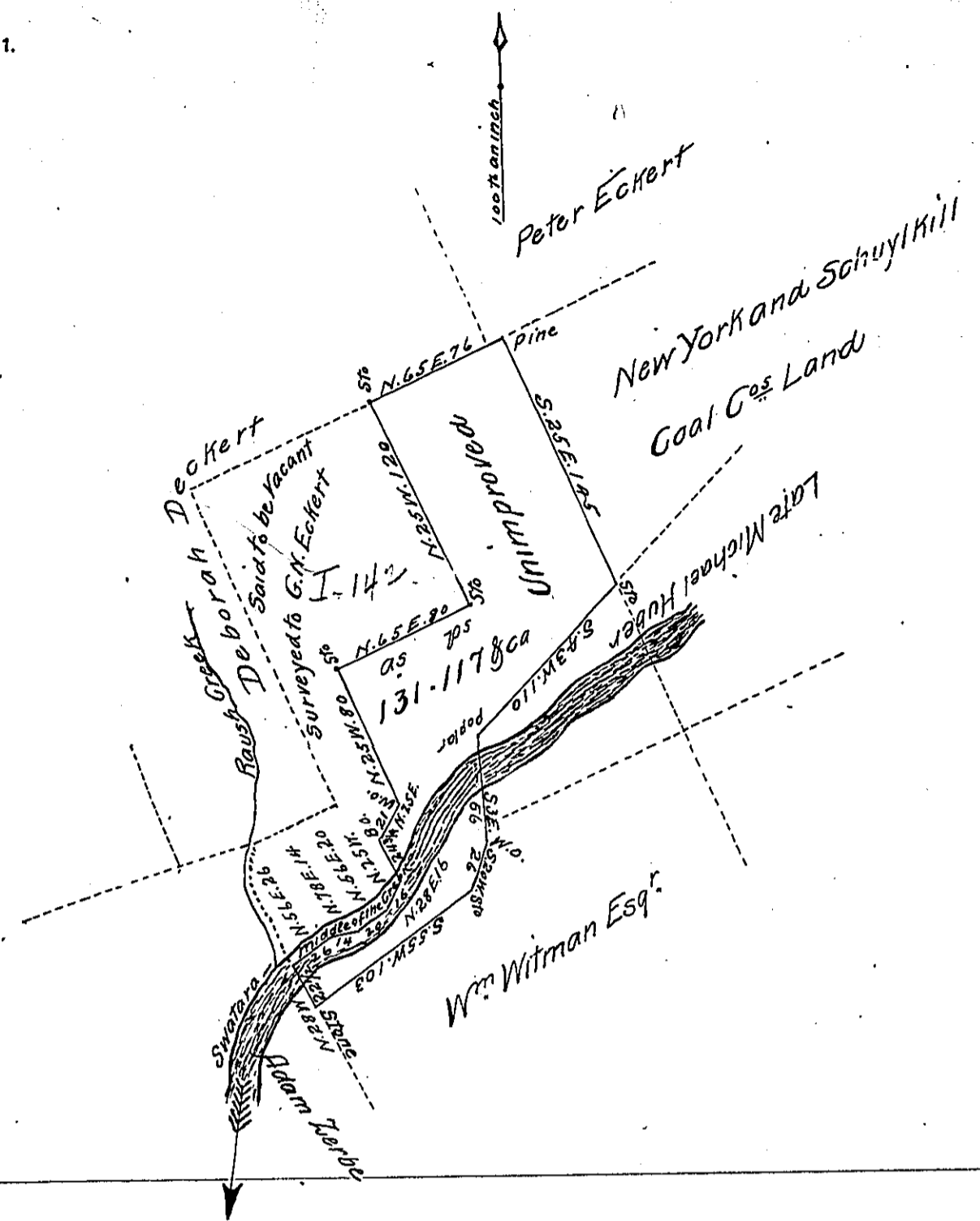


FORM No. 1.



Situate in Pinegrove township Schuylkill County, surveyed on the 15th day of September 1825, in pursuance of a Warrant dated the 1st day of March 1825 granted to William Graeff

F. Lauderbrun Dep. Suror of S^c Co.

To Gabriel Hiester Esquire
Sur^r Gen^l of Penn^a

IN TESTIMONY that the above is a copy of the original remaining on file in the Department of Internal Affairs of Pennsylvania, made conformably to an Act of Assembly approved the 16th day of February, 1833, I have hereunto set my Hand and caused the Seal of said Department to be affixed at Harrisburg, this Seventeenth day of November 1910

Henry Houck
Secretary of Internal Affairs.